

NAVAL ENGINEERING







STM Savunma Teknolojileri, Mühendislik ve Ticaret A.Ş.

STM was established in 1991 for the provision of project management, system engineering and consultancy services to the Defense Industry Agency (SSB) and the Turkish Armed Forces (TAF).

The SSB continues to be the majority shareholder in the company, which has a workforce of 850 people, 63 percent of whom are engineers.

STM is among the leading companies operating in the defense sector, and is engaged in projects, particularly in the fields of naval platforms, tactical mini UAV systems, cybersecurity and IT services, command and control projects, satellite technologies, military aviation, radar and electronic warfare, and procurement and consultancy services.

Aside from its involvement in many national projects being conducted by the Turkish defence sector, STM is also engaged in export and business development activities for NATO with operations in more than 30 countries.

In addition to acting as the main subcontractor in the MiLGEM Project for the development of Türkiye's first national corvette, STM is also carrying out the detailed design as the main contractor in the project for the construction of TCG İSTANBUL (F-515), Türkiye's first national frigate.

STM has undertaken important tasks in submarine modernization and construction projects for the Turkish Navy, and is also responsible for Türkiye's first submarine modernization export, taking the lead role in the Pakistan AGOSTA 90B project.

STM developed KARGU, Türkiye's first indigenous attack UAV System, and launched Türkiye's first Cyber Fusion Center in 2016.

Through the INTEL-FS2 Project, STM ensures the flow of intelligence between all NATO headquarters around the world, and is successfully engaged in one of Türkiye's largest software exports to the Organization.

STM diversifies its technology-based activities to meet the needs of the public and private sectors – in particular those related to the Turkish defense sector.

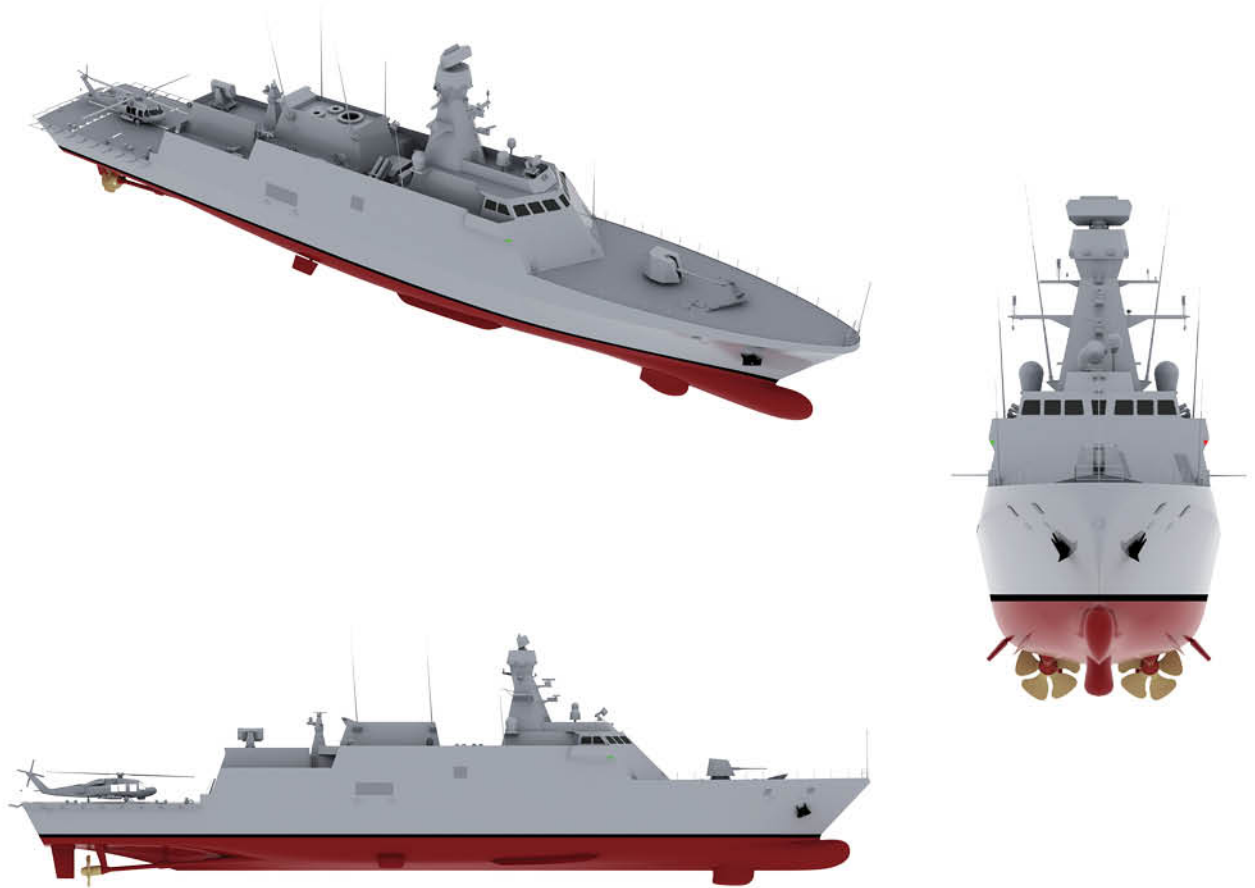
STM is headquartered in Ankara, the capital of Türkiye, and continues its operations out of nine facilities, located in İstanbul, Gölçük and Ankara, as well as Pakistan.

STM was for three consecutive years listed on the Defense News Top 100 list of the world's top 100 defense companies.



ADA CLASS CORVETTE

Ada Class Corvette is a modern warship equipped with advanced Command & Control System and sensors & weapons in order to accomplish ASW, SUW, and AAW duties.



CAPABILITIES

- High Maneuvering Capability
- Sea Keeping and Stability
- High durability and disturbed sensors & weapons in response to fires and damages
- Sensors & weapons configuration for principal warfare areas
- Stealth design and low radar cross section
- Reduced underwater noise against submerged threats and degaussing system
- Redundancy philosophy

MAIN DIMENSIONS

Length Overall	99.4 m
Length Waterline	90.5 m
Max. Beam	14.4 m
Draft	3.95 m

SPEED & ENDURANCE

Max. Speed	29+ kts
Cruising Speed	15 kts
Endurance	3500 nm at 15 kts

TONNAGE

Displacement	2400 t
--------------	--------

GROWTH CAPABILITIES

- Custom sensors & weapons
- Additional accommodation area

SENSORS & WEAPONS

- Network Supported Data Integrated Combat Management System
- 3D Search and Track Radar
- E/O Track System
- Fire Control Radar(s)
- Navigation and LPI Radars
- ESM
- IR Signature Monitoring System
- Chaff Decoy System
- Laser Warning System
- Hull Mounted Sonar
- Torpedo Counter Measure System
- Torpedo tubes
- SSM
- 2x 12.7 mm Stabilized Gun
- PDMS
- 76 mm Gun
- IFF System
- Integrated Communication System
- X-BAND SATCOM
- Ship Data Distribution System
- Ship Information System
- Navigaiton Systems
- (W)ECDIS
- WAIS

MAIN PROPULSION

- CODAG (2x Diesel Engine + 1x Gas Turbine)
- 2x Shaft and 2x Propeller (CPP)

POWER GENERATION

- 4x Diesel Generator

HELICOPTER PLATFORM & HANGAR

- Flight deck for 10 t class helicopter
- Helicopter Hangar

SHIP'S BOATS

- 2x RHIBs

ACCOMMODATION

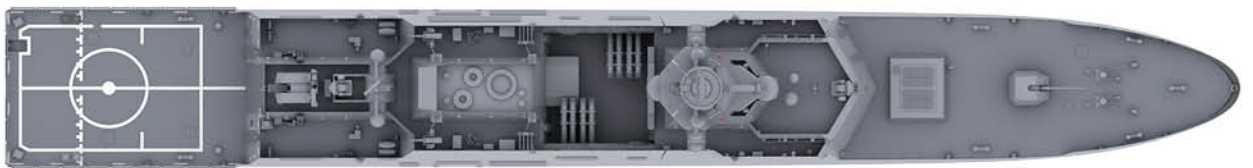
- Comfortable accommodation for 106 crew





I CLASS FRIGATE

I Class Frigate is an advanced design based on the experience gained from Ada Class Corvettes. I Class Frigates are equipped with advanced Network Supported Data Integrated Command & Control System and sensors & weapons in order to accomplish mainly AAW and SUW as well as ASW duties.



CAPABILITIES

- High maneuvering capability
- Sea keeping and stability
- High durability and disturbed sensors & weapons in response to fires and damages
- Sensors & weapons configuration for principal warfare areas
- Stealth design and low radar cross section
- Reduced underwater noise against submerged threats and degaussing system
- Redundancy philosophy
- Improved EW Capabilities
- Improved AAW Capabilities
- Improved Communication Systems
- Network Enabled Capability

MAIN DIMENSIONS

Length Overall	113.2 m
Length Waterline	105.2 m
Max. Beam	14.4 m
Draft	4.05 m

SPEED & ENDURANCE

Max. Speed	29+ kts
Cruising Speed	14 kts
Endurance	5700 nm at 14 kts

TONNAGE

Displacement	3000 t
--------------	--------

MAIN PROPULSION

- CODAG (2x Diesel Engine + 1x Gas Turbine)
- 2x Shaft and 2x Propeller (CPP)

POWER GENERATION

- 4x Diesel Generator

GROWTH CAPABILITIES

- Custom sensors & weapons
- Additional accommodation area

SENSORS & WEAPONS

- Network Supported Data Integrated Combat Management System
- 3D Search and Track Radar
- E/O Track System
- Fire Control Radars
- Illumination Radars
- Navigation and LPI Radars
- ESM
- ECM
- IR Search & Track System
- Chaff Decoy System
- Laser Warning System
- Hull Mounted Sonar
- Torpedo Counter Measure System
- Torpedo tubes
- SSM
- VLS
- 2x 25 mm Stabilized Gun
- CIWS
- 76 mm Gun
- IFF System
- ADSB
- Integrated Communication System (IP based)
- X and Ku-BAND SATCOM
- Ship Data Distribution System
- Ship Information System
- Navigation Systems
- (W)ECDIS
- WAIS

HELICOPTER PLATFORM & HANGAR

- Flight deck for 10 t class helicopter
- Helicopter Hangar

ACCOMMODATION

- Comfortable accommodation for 123 crew

SHIP'S BOATS

- 2 x RHIBs



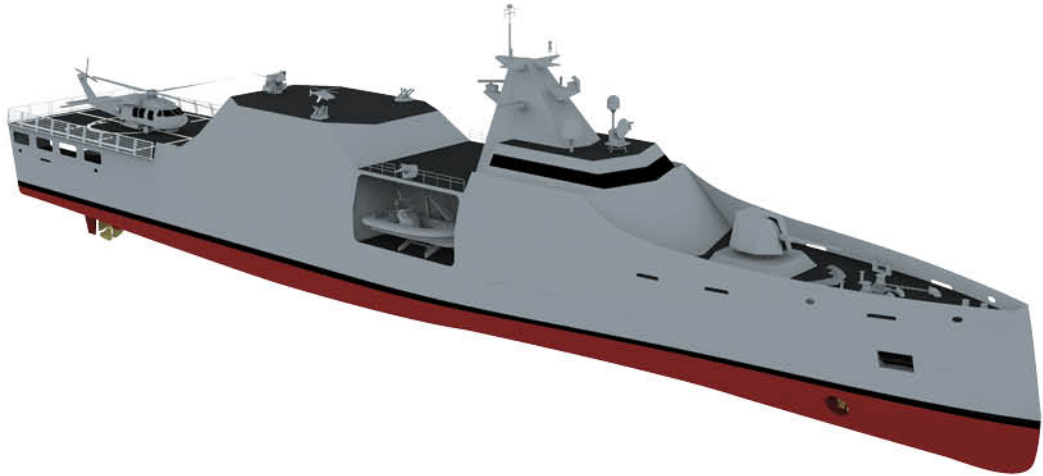


OFFSHORE PATROL VESSEL

OPV-1900

OPV-1900 is mainly designed to conduct efficient surveillance and patrolling duties for the Maritime Jurisdiction Areas.

OPV-1900's design capabilities include maritime security missions and search & rescue operations, in different operational areas.



CAPABILITIES

- Surface warfare
- Maritime security
- Surveillance
- Search and rescue operations
- Day & Night helo operations (HIFR & Vertrep)
- Sea keeping up to Sea State 5
- Helo operation up to Sea State 4
- Stealth design and low radar cross section

MAIN DIMENSIONS

Length Overall	89.5 m
Length Waterline	88.6 m
Max. Beam	13.1 m
Draft	3.15 m

SPEED & ENDURANCE

Maximum Speed	22+ kts
Cruise Speed	16 kts
Endurance	5000 nm at 16 kts

TONNAGE

Displacement	1900 t
--------------	--------

SENSORS & WEAPONS

- Combat Management System
- Navigation Radar(s)
- Navigation Systems
- ECDIS
- Integrated Communication System
- E/O System (TV/IR/LRF)
- ESM
- IFF System
- Chaff Decoy System
- 76 mm Gun
- 3x 25 mm Stabilized Gun
- SSM
- Ship Data Distribution System
- Ship Information System

MAIN PROPULSION

- 2x Diesel Engine
- 2x Shaft and 2x Propeller (CPP)
- 1x Tunnel thruster

POWER GENERATION

- 3x Diesel Generator

HELICOPTER PLATFORM & HANGAR

- Flight deck for 10 t class helicopter
- 8 tonnes hydraulic telescopic crane

SHIP'S BOATS

- 3x RHIBs

ACCOMMODATION

- Comfortable accommodation for 80 crew

GROWTH CAPABILITIES

- Custom sensors & weapons
- Additional accommodation area



OFFSHORE PATROL VESSEL

OPV-2100

OPV-2100 is mainly designed to conduct efficient surveillance and patrolling duties for the Maritime Jurisdiction Areas.

OPV-2100's design capabilities include maritime security missions, Humanitarian Assistance and Disaster Relief missions, protection of marine resources as well as search & rescue operations in different operational areas.



CAPABILITIES

- Surface warfare
- Maritime security
- Surveillance
- Humanitarian Assistance and Disaster Relief (HADR) operations
- Protection of Maritime Jurisdiction Areas
- Search and rescue operations
- Day & Night helo operations (HIFR & Vertrep)
- Sea keeping up to Sea State 7
- Helo operation up to Sea State 4
- Stealth design and low radar cross section

MAIN DIMENSIONS

Length Overall	99.5 m
Length Waterline	93.8 m
Max. Beam	13.9 m
Draft	3.5 m

SPEED & ENDURANCE

Maximum Speed	20+ kts
Cruise Speed	15 kts
Endurance	5500 nm at 15 kts

TONNAGE

Displacement	2100 t
--------------	--------

SENSORS & WEAPONS

- Combat Management System
- Navigation Radar(s)
- Navigation Systems
- ECDIS
- Integrated Communication System
- E/O System (TV/IR/LRF)
- ESM
- IFF System
- Chaff Decoy System
- 30 mm Gun
- 2x 12.7 mm Stabilized Gun
- Ship Data Distribution System
- Ship Information System

MAIN PROPULSION

- 2x Diesel Engine
- 2x Shaft and 2x Propeller (CPP)
- 1x Tunnel thruster

POWER GENERATION

- 4x Diesel Generator

HELICOPTER PLATFORM & HANGAR

- Flight deck for 10 t class helicopter
- Helicopter Hangar

SHIP'S BOATS

- 2 x RHIBs
- 2 x 20 ft Containers with handling system

ACCOMMODATION

- Comfortable accommodation for 88 crew

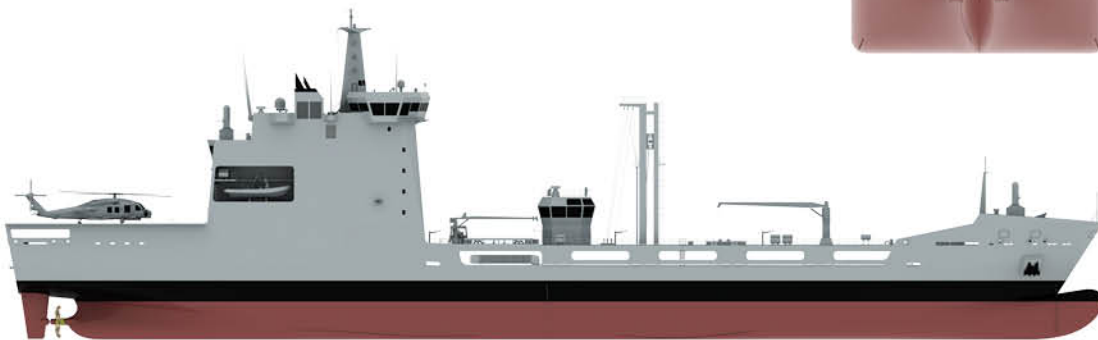
GROWTH CAPABILITIES

- Custom sensors & weapons
- Additional accommodation area



FLEET LOGISTIC SUPPORT SHIP

Fleet Logistic Support Ship is designed to provide logistics support in terms of fuel, water, and ammunition to combat and auxiliary units and could be equipped with state-of-the-art medical facilities to support Navies during war and disaster relief missions.



CAPABILITIES

- Provide logistic support to the ships at sea in terms of dry and liquid cargo
- Support Search & Rescue Operations through embarked helos
- Provide limited medical support to the ships at sea
- Day & Night helo operations (HIFR)
- Capability for future installation of modern multi-dimensional sensors & weapons suites
- Capability for defence against Chemical, Biological, Radiological, and Nuclear (CBRN) threats

MAIN DIMENSIONS

Length Overall	158.4 m
Length Waterline	155.9 m
Max. Beam	22 m
Draft	7.05 m

SPEED & ENDURANCE

Maximum Speed	20+ kts
Cruise Speed	15 kts
Endurance	10000 nm at 15 kts

TONNAGE

Displacement	16100 t
--------------	---------

SENSORS & WEAPONS

- Combat Management System
- 2x CIWS
- ESM
- Chaff Decoy System
- 2x 25 mm Stabilized Gun
- IR Search & Track System
- Integrated Communication System
- Bridge Control System
- Navigation Radar
- Navigation Systems
- ECDIS
- Ship Data Distribution System
- Ship Information System

MAIN PROPULSION

- 2x Diesel Engine (medium speed)
- 2x Shaft and 2x Propeller (CPP)

POWER GENERATION

- 4x Diesel Generator

SHIP'S BOATS

- 2x RHIBs

ACCOMMODATION

- Comfortable accommodation for 208 crew

HELICOPTER PLATFORM & HANGAR

- Flight deck for 10 t class helicopter
- Helicopter Hangar

GROWTH CAPABILITIES

- Custom sensors & weapons
- Additional accommodation area





MULTI-PURPOSE ATTACK CRAFT

STM-MPAC is a monohull platform that is designed to perform anti surface and anti air warfare along with patrol duties in shallow waters and open seas under heavy sea conditions. STM-MPAC is also capable of operating at high speeds according to its optimized effective hull form and main propulsion system configuration.



CAPABILITIES

- Naval Presence and Patrol
- Deterrence of Threats
- Coast and Offshore Patrol/Surveillance
- Air and Sea Surveillance/Control
- Full operation up to Sea State 5
- Ability to operate in shallow waters
- Lower Radar Cross Section (RCS)

MAIN DIMENSIONS

Length Overall	66.2 m
Length Waterline	60.0 m
Max. Beam	9.7 m
Draft	2.4 m

SPEED & ENDURANCE

Max. Speed	40+ kts
Cruising Speed	20 kts
Endurance	1100 nm at 20 kts

TONNAGE

Displacement	620 t
--------------	-------

SENSORS & WEAPONS

- Combat Management System
- 3D Surveillance Radar/IFF
- ESM System
- ECM System
- 2x Fire Control Radar (EO Suit TV/IR/LRF)
- E/O Director (EO Suit TV/IR/LRF)
- Laser Warning System
- 76 mm Gun
- 2x 12.7 mm Stabilized Gun (EO)
- Point Defence Missile System (PDMS)
- Surface-to-Surface Missile (SSM) System
- 2 x RF/IR Chaff Decoy Launchers
- 2 x Navigation Radar (X-Band, combined 360° coverage picture)
- LPI Radar
- Integrated (Internal/External) Communication System
- INMARSAT SATCOM
- Ship Data Distribution System
- Ship Local Area Network
- Navigation Systems
- WECDIS
- WAIS

MAIN PROPULSION

- 2x Gas Turbines + 2x Diesel Engines
- 3x Waterjets

POWER GENERATION

- 3x Diesel Generator

SHIP'S BOATS

- 1x RHIB

ACCOMMODATION

- Comfortable accommodation for 40 crew
- Galley, Dry Provision Room, Cold and Cool Rooms, Office etc.

GROWTH CAPABILITIES

- Custom sensors & weapons
- Additional accommodation area

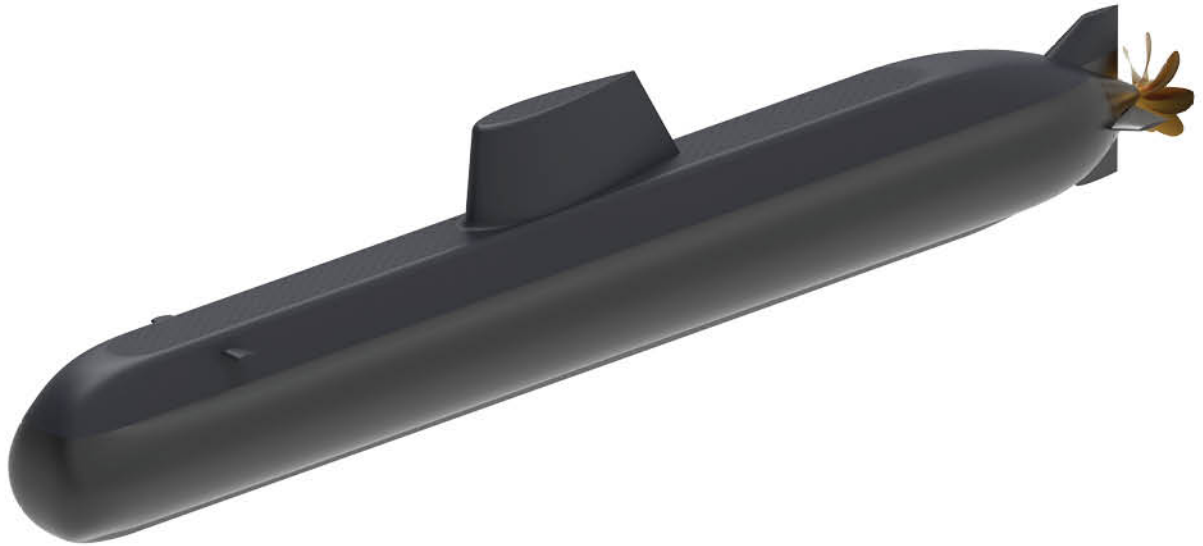




SUBMARINE

STM500

STM500 Submarine is a shallow water diesel-electric attack submarine developed by STM as a conceptual design. The platform is capable of enduring 18+6 (SF) personnel for 30 days at depths more than 250 meters, ready to fire its 4 tubes loaded with a variety of 8 modern heavy weight torpedoes and guided missiles.



CAPABILITIES

- Submarine Warfare
- Intelligence, Surveillance, and Reconnaissance
- Special Operations
- Mine Warfare
- Shallow water operations
- UXV operations
- Diving depth: 250+ m
- Endurance: 30 days

MAIN DIMENSIONS

Length Overall	42.0 m
Length Waterline	4.2 m
Max. Beam	8.5 m

SPEED & ENDURANCE

Max. Speed	18+ kts
Cruising Speed	5 kts
Endurance	3500 nm (Diesel)
	75 nm (Battery)
	4000 nm (Diesel + optional AIP)

TONNAGE

Displacement	Surfaced - 485 t
	Submerged - 540 t

SENSORS & WEAPONS

- Combat Management System
- Navigation Radar
- Optronic Search and Attack Periscopes
- Torpedo Counter Measures (Decoys)
- ESM
- Sonars:
CAS, CTA, PRS, MAS, IDRS, ONA
- 4 torpedo tubes (2 tubes available for Guided Missile) and 4 additional payload stowage

MAIN PROPULSION

- Permanent Excited Propulsion Motor (approx. 1,5 MW)

POWER GENERATION

- 2x Diesel Generator
- Lithium-Ion Batteries
- Optional: AIP System

ACCOMMODATION

- Accommodation for 18 crew
- +6 additional accommodation area for Special Forces personnel
- Captain's Cabin
- Galley, dry provisions, freezer room, separated mess rooms





COAST GUARD SHIPS

Coast Guard Ships can be tasked with search and rescue operations, Humanitarian Assistance and Disaster Relief (HADR) operations, maritime patrol and surveillance operations and protection of maritime jurisdiction areas.

Coast Guard Ships can be configured with the capability of law enforcement special forces to conduct counter-drug, counter-piracy, and counter-terrorist operations.

STM provides turnkey solutions for Coast Guard Ships to be configured in accordance with each country's maritime law enforcement agency requirements.







COAST GUARD SHIPS

CG-3100



MAIN DIMENSIONS	
Length Overall	113.2 m
Length Waterline	105.2 m
Max. Breadth	14.4 m
Draft	4.05 m

SPEED & ENDURANCE	
Max. Speed	25+ kts
Cruising Speed	14 kts
Endurance	8000 nm at 14 kts

TONNAGE	
Displacement	3100 t

SENSORS & WEAPONS

- 1 x 30 mm/25 mm Gun
- 2 x 12.7 mm Gun
- HF Radio Systems
- V/UHF Radio Systems
- Weather FAX
- S/P Telephone System
- Local Area Network (LAN)
- Satellite TV System
- CCTV System
- 1x X-Band Radar
- 1x S-Band Radar
- 2x GPS
- Thermal Cameras
- Ship Data Distribution System
- ECDIS

MAIN PROPULSION

- 2x or 4x Diesel Engine (acc. to speed requirements)
- 2x Propeller (CPP or FPP)
- 1x Tunnel thruster

POWER GENERATION

- 4x Diesel Generator

COAST GUARD FUNCTIONS CAPABILITIES

- 2x 5.5 meters RHIBs (stern ramp launch and recovery system)
- 4x 7 meters RHIBs
- 1x 20 ft multi mission container space
- Rescue Zone for multi purpose missions (50 persons capacity)
- Sick-bay
- Flight deck for 10 t class helo and Hangar for 1 helo / 2 UAV (for day & night landing and takeoff)
- A hydraulic-telescopic crane of 10 tons (SWL) to serve aft deck area
- 2x Water cannons

LAW ENFORCEMENT CAPABILITIES

- Law Enforcement Operation Center
- Law Enforcement Briefing Center (up to 50 crew)
- Detention Area
- 3x Detention Cell

ACCOMMODATION

- Comfortable accommodation for 125 crew

GROWTH CAPABILITIES

- Custom sensors & weapons
- Additional accommodation area



COAST GUARD SHIPS

CG-1071



MAIN DIMENSIONS

Length Overall	66 m
Length Waterline	66 m
Max. Breadth	12 m
Draft	2.8 m

SPEED & ENDURANCE

Max. Speed	22 kts
Cruising Speed	16 kts
Endurance	2700+ nm at 16 kts

TONNAGE

Displacement	1071 t
--------------	--------

SENSORS & WEAPONS

- 1 x 30 mm/25 mm Gun
- 2 x 12.7 mm Gun
- HF Radio Systems
- V/UHF Radio Systems
- Weather FAX
- S/P Telephone System
- Local Area Network (LAN)
- Satellite TV System
- CCTV System
- 1x X-Band Radar
- 1x S-Band Radar
- 2x GPS
- Thermal Cameras
- Ship Data Distribution System
- ECDIS

MAIN PROPULSION

- 2x or 4x Diesel Engine (acc. to speed requirements)
- 2x Propeller (CPP or FPP)
- 1x Tunnel thruster

POWER GENERATION

- 3x Diesel Generator

COAST GUARD FUNCTIONS CAPABILITIES

- 3x 11 meters RHIBs (stern ramp launch and recovery system)
- 1x 20 ft multi mission container space
- Rescue Zone for multi purpose missions (50 persons capacity)
- Sick-bay
- Flight deck and Hangar for 1 UAV
- A hydraulic-telescopic crane of 10 tons (SWL) to serve aft deck area
- 2x Water cannons

LAW ENFORCEMENT CAPABILITIES

- Law Enforcement Operation Center
- Detention Area

ACCOMMODATION

- Comfortable accommodation for 35 crew

GROWTH CAPABILITIES

- Custom sensors & weapons
- Additional accommodation area



COAST GUARD SHIPS

CG-1041



MAIN DIMENSIONS	
Length Overall	70 m
Length Waterline	64.3 m
Max. Breadth	12 m
Draft	2.8 m

SPEED & ENDURANCE	
Max. Speed	22 kts
Cruising Speed	16 kts
Endurance	2500+ nm at 16 kts

TONNAGE	
Displacement	1041 t

SENSORS & WEAPONS

- 1 x 30 mm/25 mm Gun
- 2 x 12.7 mm Gun
- HF Radio Systems
- V/UHF Radio Systems
- Weather FAX
- S/P Telephone System
- Local Area Network (LAN)
- Satellite TV System
- CCTV System
- 1x X-Band Radar
- 1x S-Band Radar
- 2x GPS
- Thermal Cameras
- Ship Data Distribution System
- ECDIS

MAIN PROPULSION

- 2x or 4x Diesel Engine (acc. to speed requirements)
- 2x Propeller (CPP or FPP)
- 1x Tunnel thruster

POWER GENERATION

- 3x Diesel Generator

COAST GUARD FUNCTIONS CAPABILITIES

- 3x 11 meters RHIBs (stern ramp launch and recovery system)
- 1x 20 ft multi mission container space
- Rescue Zone for multi purpose missions (50 persons capacity)
- Sick-bay
- Flight deck and Hangar for 1 UAV
- A hydraulic-telescopic crane of 10 tons (SWL) to serve aft deck area
- 2x Water cannons

LAW ENFORCEMENT CAPABILITIES

- Law Enforcement Operation Center
- Detention Area

ACCOMMODATION

- Comfortable accommodation for 35 crew

GROWTH CAPABILITIES

- Custom sensors & weapons
- Additional accommodation area

STM SAVUNMA TEKNOLOJİLERİ MÜHENDİSLİK VE TİCARET A.Ş.

📍 Mustafa Kemal Mahallesi 2151. Cadde
No: 3/A Çankaya / ANKARA / TURKEY

☎ +90 312 266 35 50

📠 +90 312 266 35 51

www.stm.com.tr

in 🐦 f 📷 / @STMDefence

